

MOBILE 1000™

High-Density Storage





Make it Mobile.

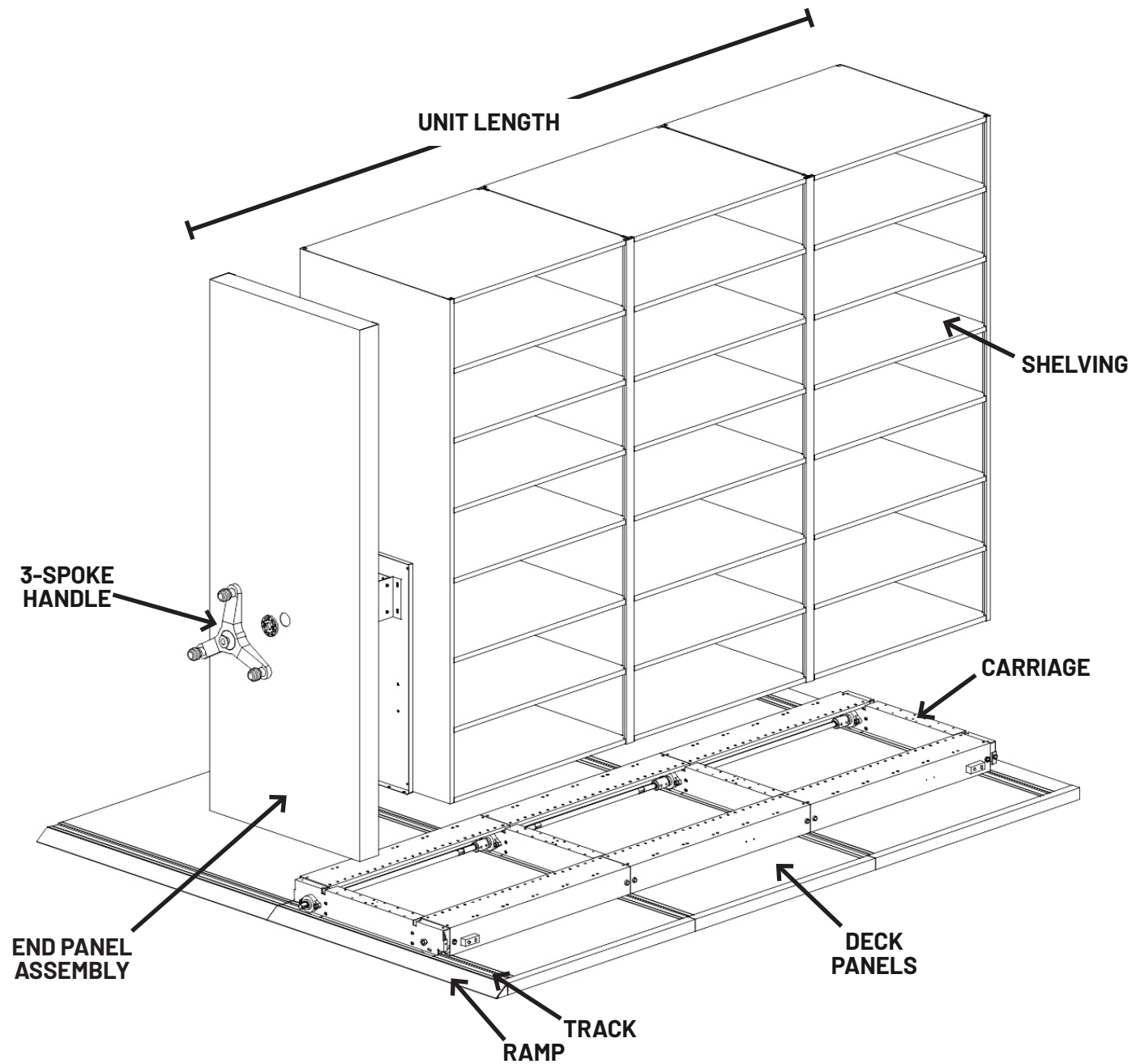
Designed to maximize floor space in a compact footprint, Mobile 1000 delivers high-density storage with streamlined simplicity. Smooth operation and durable construction ensures reliable performance, while flexible configurations keep everything organized, accessible, and secure. With Mobile 1000, growth doesn't require more space - just smarter storage.



Founded in 1966, Safco Products designs furniture that's made for the way people work today. As part of Liberty Diversified International—a third-generation, family-owned company—Safco is built on a legacy of quality, quick delivery, and thoughtful design. From seating and desks to technical workstations, our products bring function and flexibility to any environment, helping customers create spaces that reflect their brand and work style.

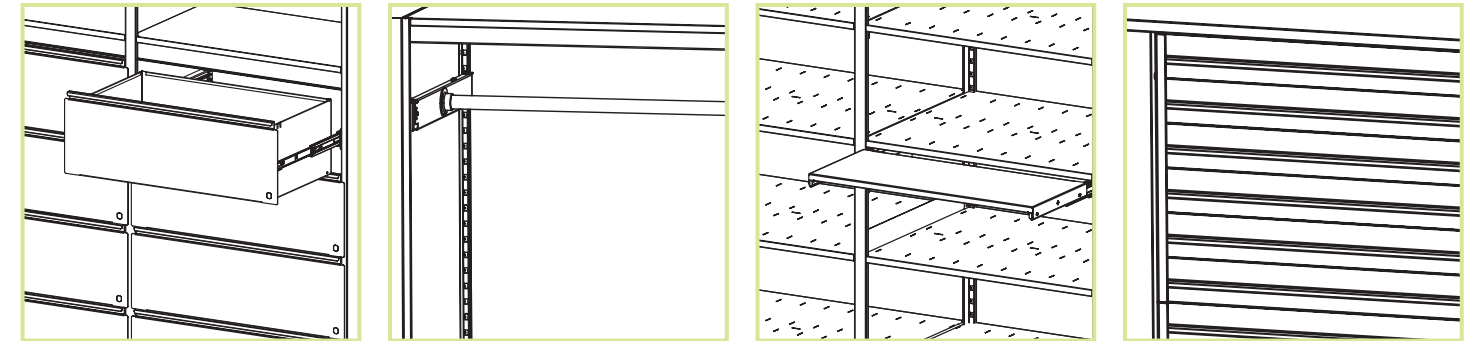
Product Overview

Mobile 1000 is designed as a modular, made to order high-density storage system. Engineered to deliver dependable performance across a wide range of applications, every system is configured to meet the demands of the space, the load, and the workflow.



Product Configurations

Mobile 1000 supports a wide range of shelving, drawer, and accessory options making it easy to store everything from small items and files to uniforms, equipment, and bulk materials. Adjustable components and specialty accessories help tailor storage for organization, access, and efficiency, while modular construction allows layouts to evolve as needs change.



Technical Highlights

MODULAR BY DESIGN

- Configured to fit room dimensions, storage needs, and access patterns
- Unit length up to 30 feet
- Unit depth can range from 12" - 48"
- Unit height up to 8 feet
- Track connectors allow for unlimited units
- Track and unit can be added as storage demands change

BUILT FOR HEAVY LOADS

- Engineered to support up to 1,000 lbs. per lineal foot of unit
- Mechanical assist allows 10,000 lbs. to be moved with 1 lb of effort

DURABLE TRACK & FOUNDATION

- All steel, surface-mounted track system
- Non-permanent installation allows relocation or reconfiguration
- Leveling feet every 6" allow the system to be easily re-leveled if needed

HEAVY-DUTY CONSTRUCTION

- Heavy-gauge steel components throughout
- Solid steel wheels for smooth, reliable movement
- Designed and manufactured in USA

INTEGRATED SAFETY FEATURES

- Ergonomic locking handle prevents unintended movement
- High-visibility indicator provides a clear visual signal when an aisle is in use or available for movement

System Features

Designed for safe operation, smooth movement, and everyday durability.



LOCKED

Red indicator on handle alerts users when aisle is in use



UNLOCKED

Aisle is not in use and it's safe to start rolling



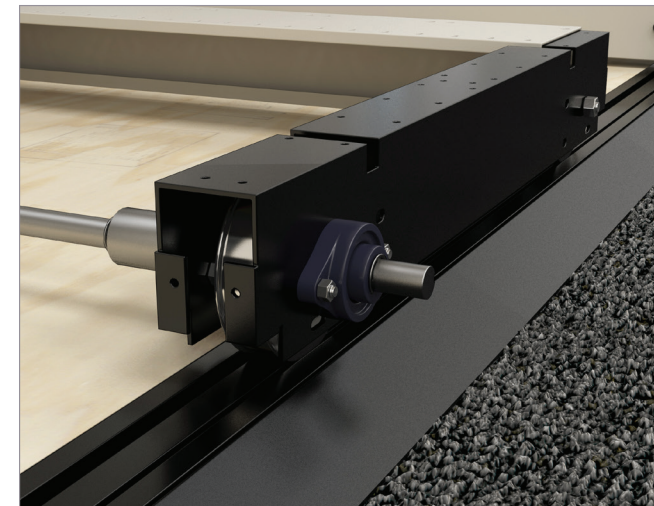
SAFE

Anti-tip brackets ensure system stability



SECURE

Optional floor lock adds extra layer of security when required



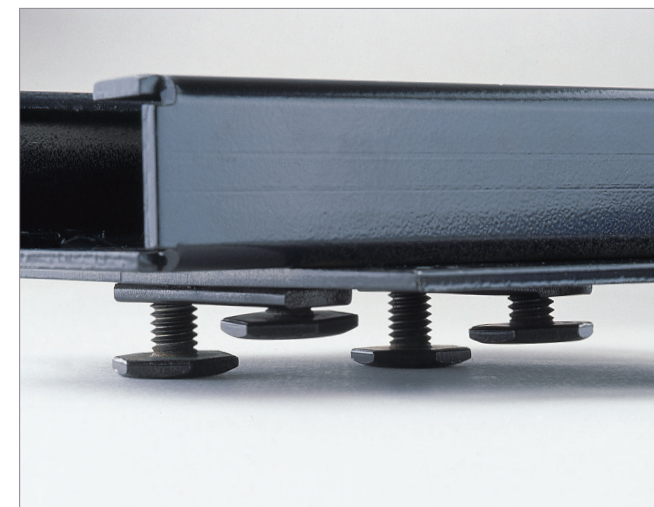
STRUCTURAL

Solid steel wheels on captured bearings deliver quiet, controlled movement



STABLE

Tracks interlock and overlap for strength and stability



ADJUSTABLE

Heavy-duty steel tracks include leveling feet at 6" increments for uneven floors



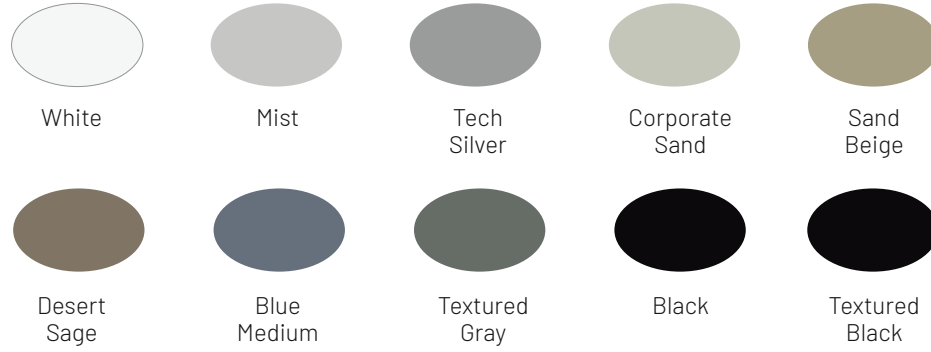
ACCESSIBLE

Standard ramp entry with low-profile 1.5" step-up
Optional ADA compliant ramp with 1:12 slope

Finish Options

POWDER COAT PAINT

Mobile 1000 features a factory applied powder coat finish that fully covers steel components inside and out for a consistent, durable appearance across the entire system



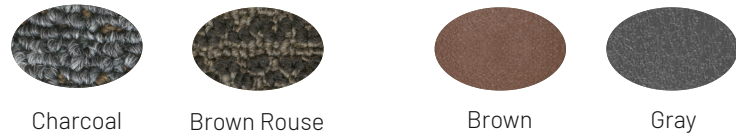
CUSTOMER'S OWN PAINT

Available upon request

FLOORING

Carpet

Vinyl Tile



CUSTOMER'S OWN DECK COVERING

Available upon request



Think Outside the Box

Whether the priority is quick access, intentional organization, or maximizing limited space, Mobile 1000 keeps everything moving. From libraries and retail to healthcare and public safety environments, Mobile 1000 helps make room for what matters most.

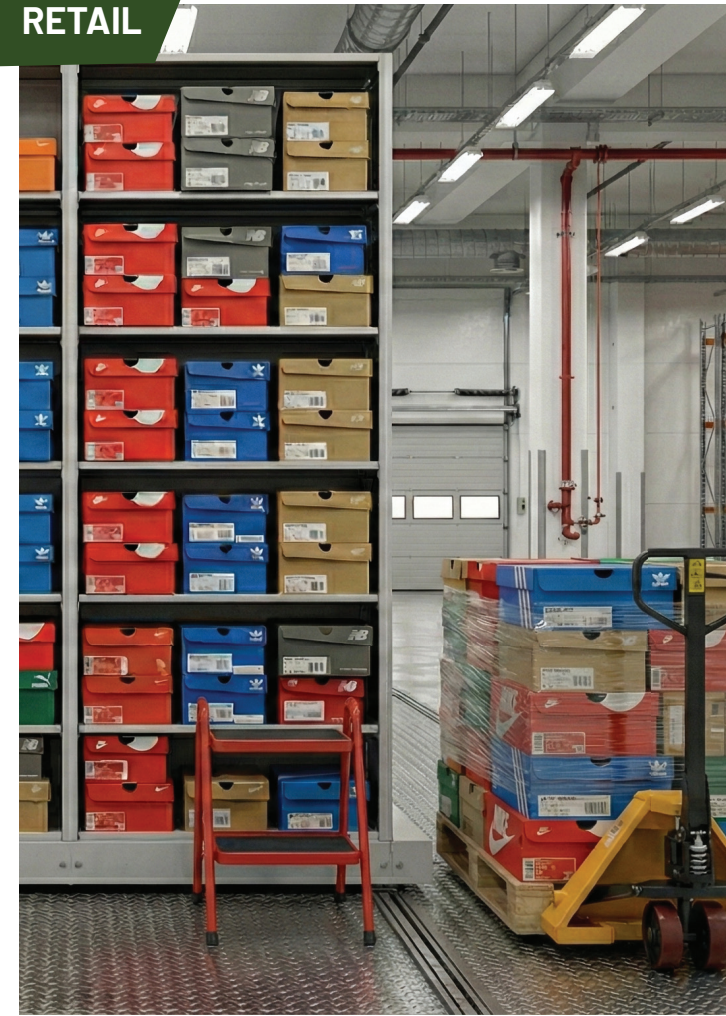
HEALTHCARE



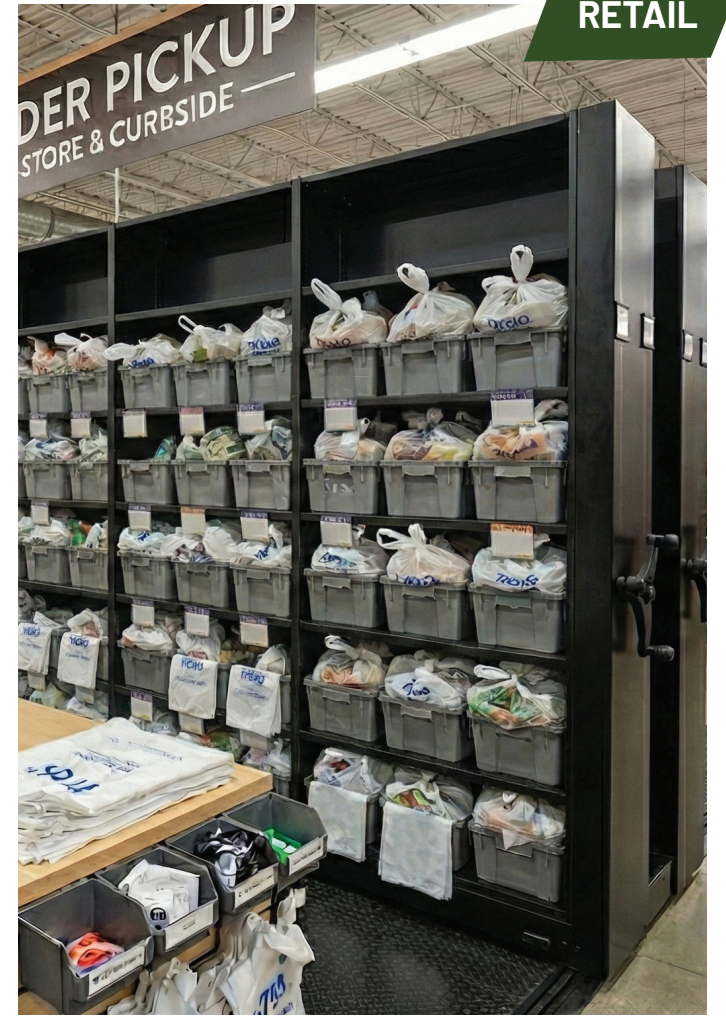
ARCHIVAL



RETAIL



RETAIL



ATHLETIC



LIBRARY

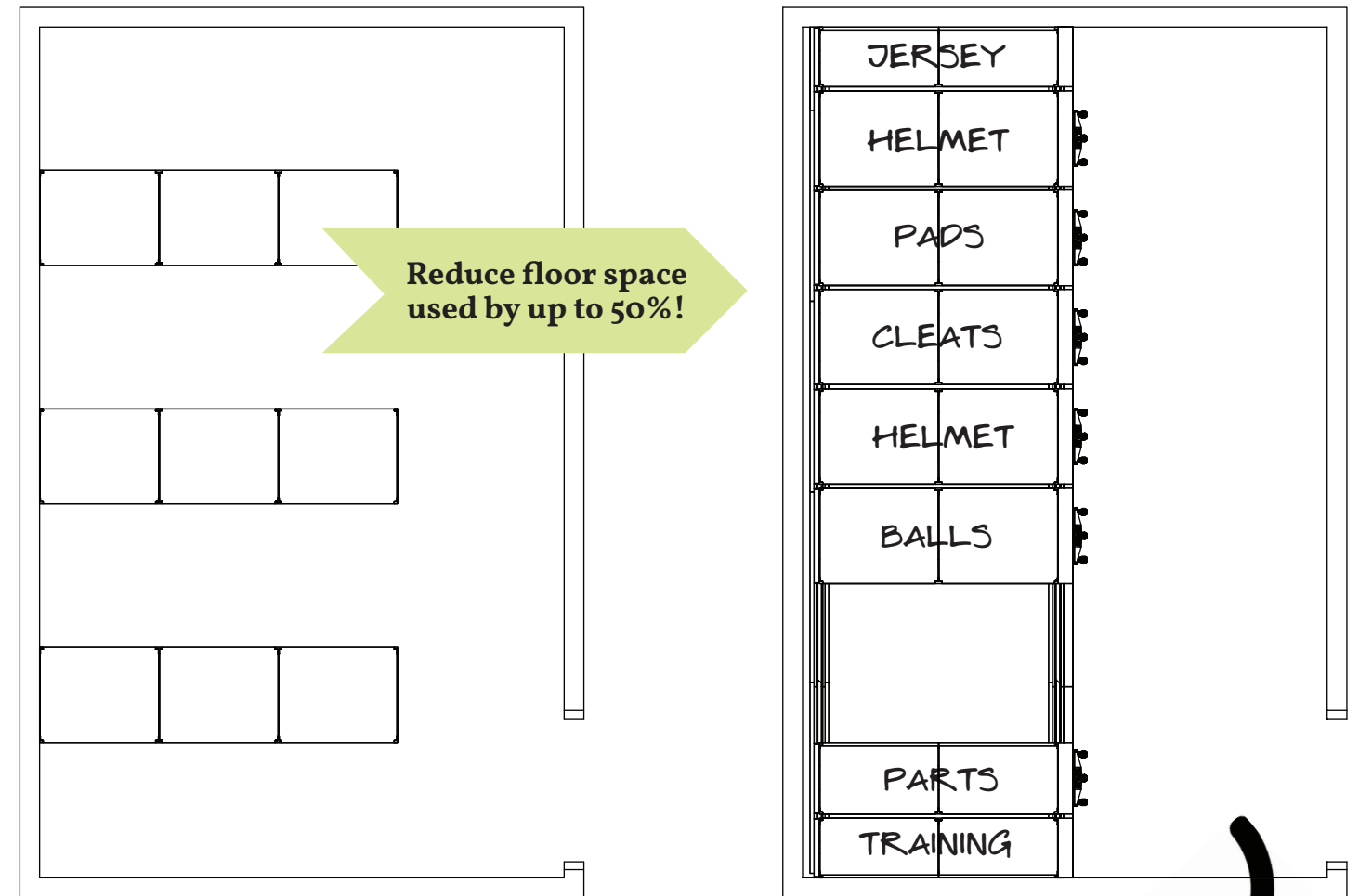


EVIDENCE LAB





Maximize Your Footprint



Let Us Plan Your Space Today

Every great storage solution starts with a smart plan. Our team of in-house space planners work alongside you to simplify the process by providing guidance on layout, product options, and best practices so your storage fits your space and your goals. From early planning to final specifications, we provide the support and resources you need to make confident decisions and keep your project on track.

- Layout optimization and aisle planning
- Product and accessory selection
- Capacity modeling and space efficiency
- Budget-conscious system configurations



CONTACT A SAFCO
SPACE PLANNER



Let's Connect

Contact Us

Customer Care: 888-917-6225
Monday-Friday 7:30AM-6:00PM CT

info@safcoproducts.com
spaceplanning@safcoproducts.com
installationsupport@safcoproducts.com

Showrooms

5600 Hwy 169 N.,
New Hope, MN 55428

The MART #1054A
Chicago, IL 60654

Contact us to book an in-person or virtual visit appointment

Contact your local Rep

Contact your local SAFCO independent rep group for more information on our workplace and education contract furniture solutions, including how to purchase our products.

Find your local rep at info.safcoproducts.com/locate-a-rep





www.safcoproducts.com

©Safco Products Company, All Rights Reserved

MOBILE1000_BROC_030326